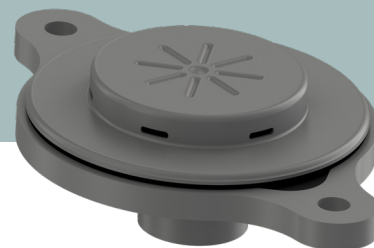


EvoLift® Pro

BATTERY VENTING SYSTEM - METAL

„Solution for better equalization“



FIELDS OF APPLICATIONS

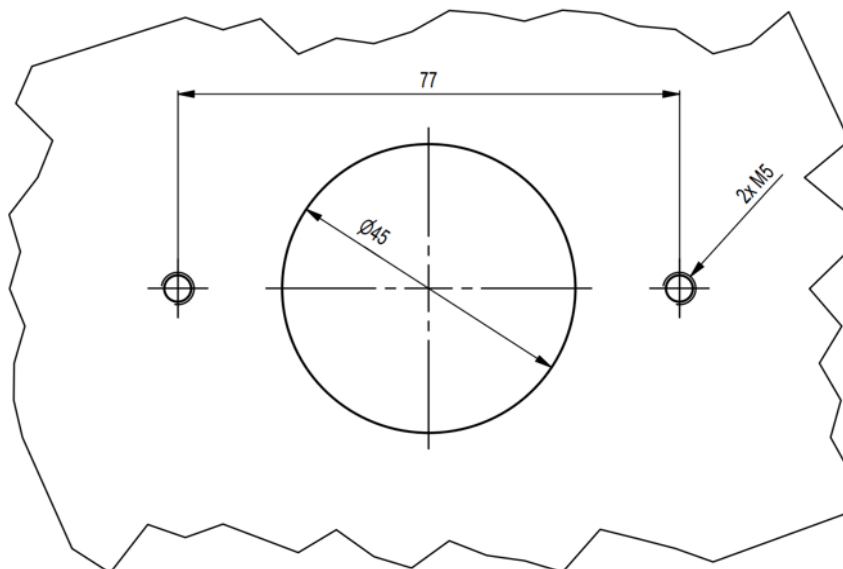
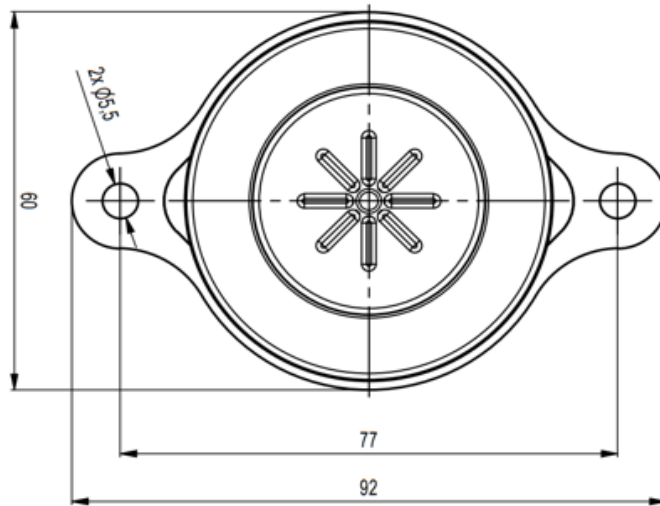
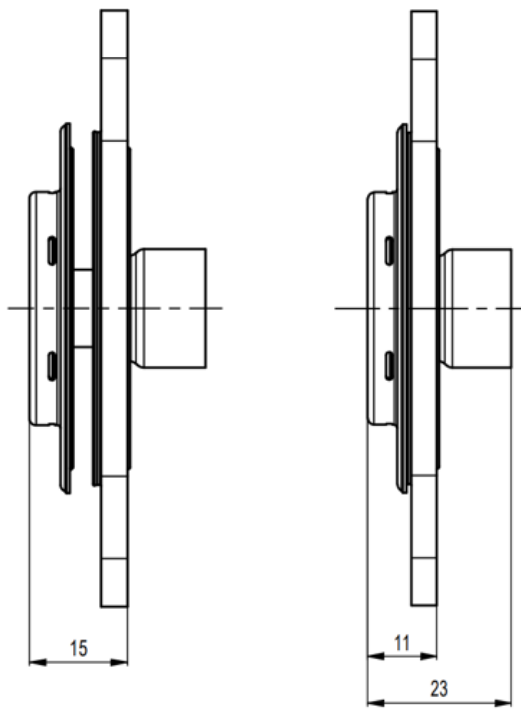
- Battery systems
- Battery modules
- BEV's
- Hybrids and energy storage systems

Vent Type	Reversible metallic robust version with valve circuit
Material	Aluminum / PP GF25 FR / PTFE / TPE / stainless steel
Dimension	92 x 60 x 23
Installation space	
• Connection	Screw: 2x M5
• Connection dimensions	77 mm
• Hole	Ø 45 mm
Opening pressure (adjustable)	
• Ventilation	≤ -30 mbar
• Venting	≥ 15 mbar
• Emergency venting	≥ 80 mbar
Air flow	
• No venting or ventilation	Between -30 mbar and +15 mbar (adjustable)
• DAE - ventilation	≥ 400 ml/min @ -50 mbar
• DAE - venting	≥ 600 ml/min @ 50 mbar
• Emergency venting	≥ 50 l/s @ 130 mbar
Leakage	≤ 1 ml/min @ -10 mbar ≤ p ≤ +5 mbar
Water resistance	≥ 30 min @ 250 mbar
IP-Protection class	IP68, IPX9K
Flame resistant	UL94 V0
Temperature	-40 °C to +80 °C

A summary of the benefits

- Variable connection from outside with relatively low installation effort
- Testable in the EOL (End of Line) test
- Reduction of humidity in the battery pack as the membrane does not permanently equalize pressure





The information and values listed here were determined under model and laboratory conditions. They do not represent any assured properties, guarantees or warranties. The validation of the products in the respective application, their performance as well as their suitability for a specific purpose is the responsibility of the user.