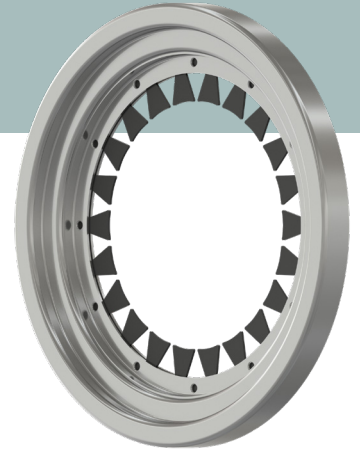


SHAFT GROUNDING RING - WET

„Safe protection of bearings in electric drives“



AREAS OF APPLICATION

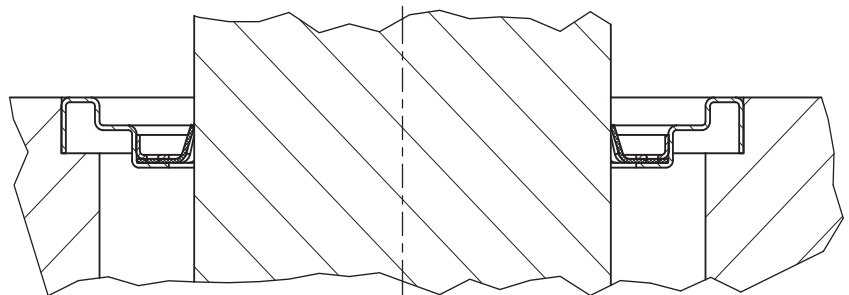
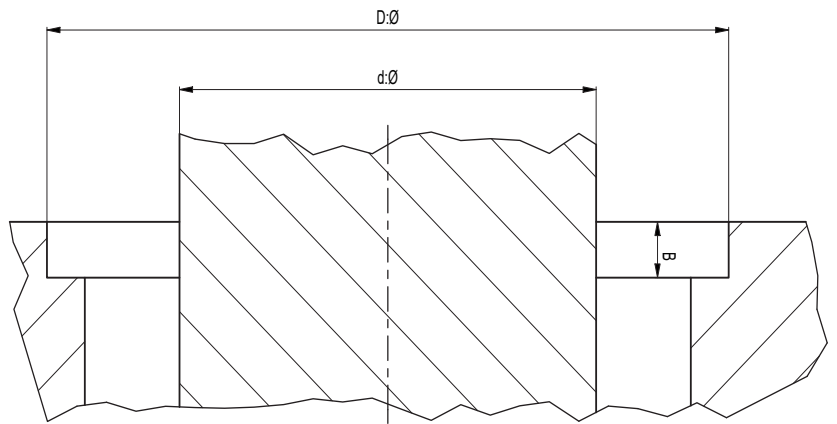
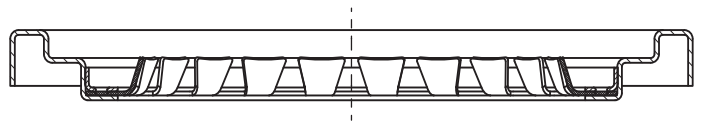
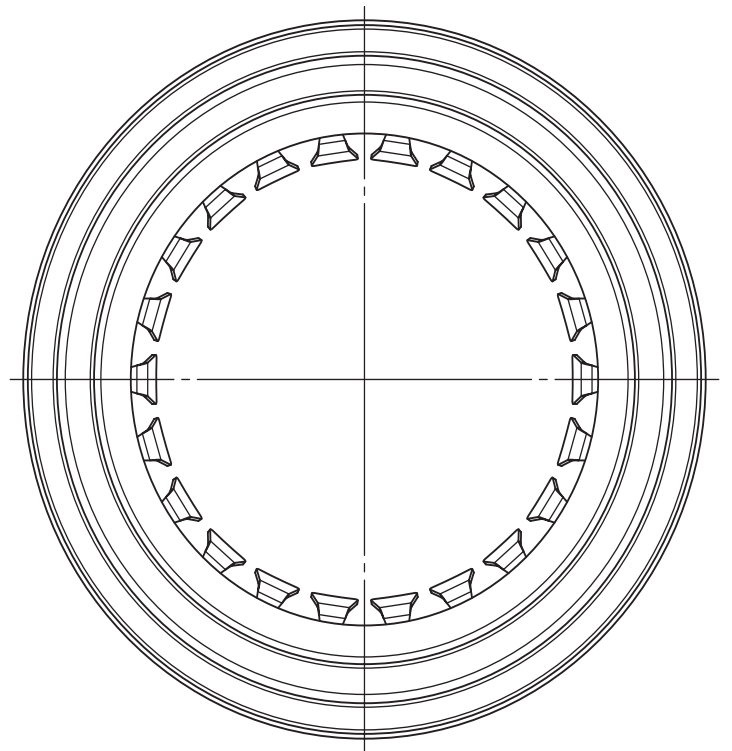
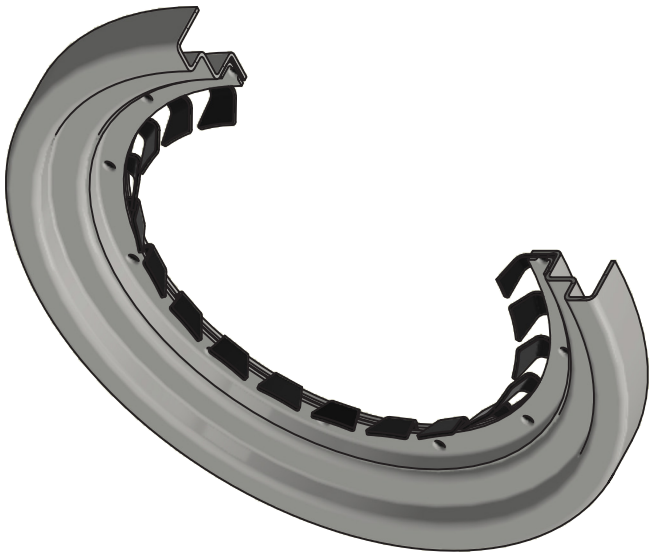
Use in electric motors, generators, and other rotating machines in industrial and commercial applications.

Shaft diameter	Min. Ø 10 mm
Peripheral speed	Up to 60 m/s
Direction of rotation	Bidirectional direction
Temperature	-40°C to +120 °C without impairing functionality
Operating principle	<p>Conductive lamellas of the PTFE disc contact the shaft → Parasitic currents are efficiently dissipated from the rotating shaft</p> <p>Conductive lamellas of the PTFE disc create a capacitor with the shaft → Capacitive voltage divider divides the voltage into safe partial voltages to minimize the electrical potential at the bearings</p>

A summary of the advantages

- Efficient protection in wet environments
- High resistance to moisture, corrosion, and dirt
- Maintenance-free design
- Low impedance





The information and values listed here were determined under model and laboratory conditions. They do not represent any assured properties, guarantees or warranties. The validation of the products in the respective application, their performance as well as their suitability for a specific purpose is the responsibility of the user.